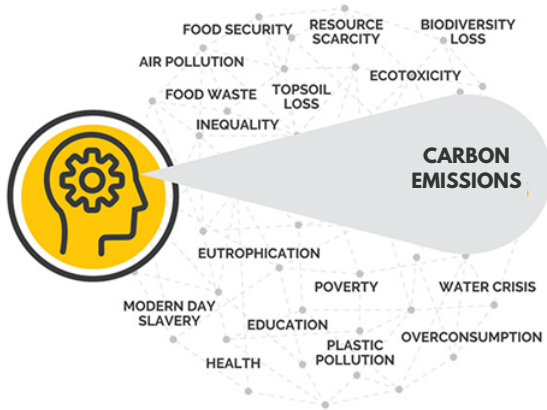


SUSTAINABILITY IN AGRICULTURE

- AbacusBio worked with [Americot](#) to develop and implement pipelines for imputation and genomic prediction analysis in Americot's cotton breeding program. These pipelines enhance decision making throughout breeding processes.
- We have been working closely with [Forest Lodge](#) throughout the 2021 and 2022 pollination season to better understand how management affects orchard and hive outcomes. Forest Lodge is the world's first 100% electric, zero fossil fuel orchard and is located in Cromwell, New Zealand.

FOOD FOR THOUGHT

- Check out a few tips from [Forbes](#) for improving your workplace culture! A positive workplace culture is essential for business sustainability. AbacusBio is committed to developing and maintaining sustainable strategies focused on environmental footprint, social responsibility, and economics.
- [Read more](#) about B Lab, the nonprofit network transforming the global economy to benefit people, communities, and the planet.
- Starting a presentation with the Muppet's theme tune? Check! Our MD Peter Amer and Nic Friggens recently presented at ICAR 2023 in Spain on [Resilience: From science to the livestock industry](#).



HOT TOPICS ABOUT SUSTAINABILITY

- 1 Reducing emissions is just the tip of the iceberg.
- 2 A sustainable industry balances its economic development, environmental impact, and social responsibilities.
- 3 Creating a balanced breeding objective is a long-term strategy to maintain sustainability.



BRANCHING OUT INTO SUSTAINABILITY

- Read all about a [project](#) completed for [Defra](#) and [AHDB](#) around: A vision for improving the UK sheep and beef sectors through breeding over the next 10 years.
- AbacusBio continues to work with [WorldFish](#), evaluating models and strategies to implement genetic improvement programs for indigenous Tilapia species across Southern Africa. These projects seek to establish sustainable access to improved germplasm suitable for use in emerging aquaculture industries across the region. The focus on indigenous Tilapias helps to address challenges associated with biosecurity and biodiversity risks from the use of non-indigenous germplasm.
- Over 2 billion cups of coffee are consumed a day! Move over Arabica - AbacusBio is investigating the needs and opportunities within Robusta varieties of coffee bean, with a particular focus on breeding and variety improvement for [World Coffee Research](#).

CATCH US AT THESE UPCOMING CONFERENCES

- [E Tipu IFAMA 2023 World Conference - June](#)
- [25th AAABC Conference 2023 - July](#)
- [Melbourne 23rd Congress for Genetics and Genomics - July](#)
- [Beef Improvement Symposium 2023 - July](#)
- [EAAP+WAAP+Interbull Congress 2023 - August](#)

WHAT IS NET ZERO 2050?

The food and beverage sector is responding to consumer pressure for a sustainable supply chain, with many companies aiming for Net Zero 2050. The sector will need to source food from producers that are net zero emitters. Net zero means cutting GHG emissions to as close to zero as possible, with any remaining emissions re-absorbed from the atmosphere. Businesses looking to sell into value-add food chains will need to become net zero and prove that they are. [Find out more here and here.](#)

We are opening a new office soon! Keep an eye out for the launch of **AbacusBio Canada**

Join our Applied Genetic Improvement Community group on [LinkedIn!](#)

